

## PARTS • DROP IN REPLACEMENT UNITS • PARTS KITS • REPAIRS

**R. A. ROSS & ASSOCIATES, INC.**  
*Keeping process flowing since 1985*

2231-A Ampere Drive, Louisville, KY 40299



502 267-8677 • 1 800-489-8677 • Fax 502 266-7928 • [www.raross.com](http://www.raross.com)

We stock or can order parts, part kits and drop in replacements for the following brands.

And we offer repairs on most every pump or can duplicate hard to find or no longer manufactured parts.

Abaque

Ahlstrom

Allis-Chalmers

All-Prime

Allweiler

American Marsh

American

Wellworks

Ansimag

ARO

Aquflow

Aurora

Becker

Bingham

Blackmer

Black-Clawson

Boerger

Bornemann

Busch

Chicago

Clow

Continental



Cornell

Crane

Crane Deming

Dean

Dekker

DeLaval

Deming

Dickow

Dover

Durco

Envirogear

Fairbanks Morse

Finish-Thompson

(FTI)

Flowserve

Floway

Flygt

Galigher

Gardner-Denver

Gorman-Rupp

Goulds

Graco



Graham Vacuum

Griswold

Grundfos

G&L

Gusher

HCP

Hidrostal

Ingersoll-Dresser

Pump (IDP)

Ingersoll-Rand

ITT

Kinney-Vacuum

Liberty

Lobee

LMI

Marlow

MDM

Milton Roy

Mono

Monoflo

Morris

Moyno



MP Pump

MTH

Nash

Neptune

Netzsch

NOV

Paco

Patterson

PCM

Peerless

Pioneer

Pulsafeeder

Robbins & Meyers

Roper

Roto-Jet

Sandpiper

Seepex

Sethco

Smith & Loveless

Spectrom

Sulzer

Summit



Sundyne

Tarby

Tuthill

US Vacuum

Vanton

Verderflex

Versamatic

Vertiflo

Viking

Warman

Warren

Warren-Rupp

Watson-Marlow

Weir

Wemco

Wilden

Worthington

Xylem

Yamada

Yeomans

Zoeller

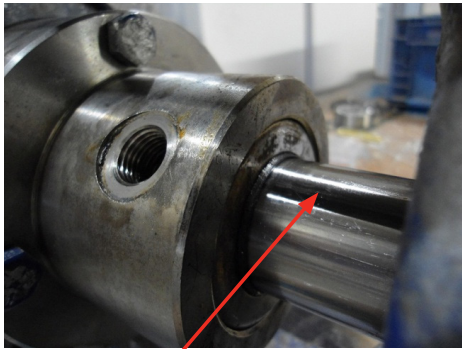
***If you don't see your part or pump listed, we can often duplicate, even cast parts!***

*See reverse side for repairs and custom built fabrications*

## PARTS • DROP IN REPLACEMENT UNITS • PARTS KITS • REPAIRS

### *Repair case study:*

A German made Italian owned company pump with no parts available in the US had a lip seal leaking a dangerous chemical. We solved the problem in a very timely manner, saving the customer both time and money, and created a vastly safer pump.



*The original lip seal was installed in the back of the stuffing box to keep the oil inside the box.*



*We custom designed a low operating height Type 8 mechanical seal in place of the lip seal for improved sealing.*

### *Whatever it takes:*

#### **Custom part duplication**



*Original part – Top bolt    Duplicate part – Bottom bolt*

Our customer was in need of a part for an older pump and faced with long leadtimes and high costs.

The part needed was a custom machined eye-bolt, not an off the shelf hardware store type item, and had a 10-12 week leadtime at a cost of over \$400.

With one of the customer's parts as a template, R. A. Ross was able to work with one of our vendors to have the part duplicated at less than half the cost and reduce the leadtime to approximately a third of the OEM.

While this was a significant savings to the customer for one it was a tremendous savings as they purchased 5 of them. The custom duplication process also gave them the option to select whatever material they wanted; carbon steel, 316ss or 304ss.

### *Custom fabrication:*

A large midwest oil company needed three mobile units for testing gasoline in multiple locations. Customer is so pleased they have ordered additional units.

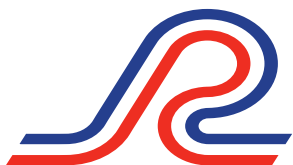
We really enjoy these type of challenges!



*Custom Blackmer trailer package built to customer requirements.*



*Expert repairs on every product we sell.*



**R. A. ROSS & ASSOCIATES, INC.**  
*Keeping process flowing since 1985*

2231-A Ampere Drive, Louisville, KY 40299  
502 267-8677 • 1 800-489-8677  
Fax 502 266-7928 • [www.raross.com](http://www.raross.com)

**PUMPS • FILTERS • BLOWERS • MIXERS • REPAIRS • SPECIALTY**