



**R. A. ROSS & ASSOCIATES, INC.**  
*Keeping process flowing since 1985*

2231-A Ampere Drive, Louisville, KY 40299  
 502 267-8677 • 1 800-489-8677  
 Fax 502 266-7928 • [www.raross.com](http://www.raross.com)

**PUMPS • FILTERS • BLOWERS • MIXERS • REPAIRS • SPECIALTY**

**Amiad®**  
 WATER SYSTEMS



AMIAD FILTER SYSTEMS



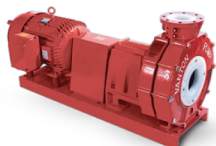
FINISH THOMPSON PUMPS

**HCP**  
**HGP**  
 PUMPS AMERICA



HCP  
 SUBMERSIBLE PUMPS

**VANTON**



VANTON PUMP TANK  
 NONMETALLIC SYSTEMS



VANTON FLEX-I-LINER ROTARY  
 PERISTALTIC PUMPS



SUMP GARD VERTICAL  
 CENTRIFUGAL PUMPS

**VERIFLO**



VERIFLO  
 VERTICAL SUMP PUMPS

**ABEL**



ABLE PUMPS

**mody**  
 Pumps



MODY SS DEWATERING  
 SUBMERSIBLE PUMPS



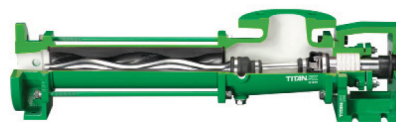
MODY SEWAGE PUMPS

**Neptune**  
 Part of Pump Systems Group



NEPTUNE MIXERS &  
 METERING PUMPS

**TARBY**



TARBY PROGRESSIVE CAVITY PUMPS

**AMERICAN-MARSH PUMPS**



AMERICAN MARSH VERTICAL TURBINE PUMPS

**POLYPROCESSING**  
 SOLUTIONS, SIMPLIFIED.



POLYPROCESSING TANKS

**Tuthill**



QUBE ENCLOSED BLOWERS

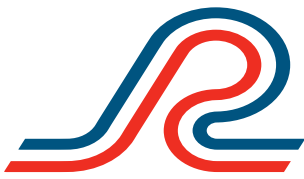


TUTHILL PNEUMATIC BLOWERS

**NOVO**



NOVO PORTABLE PUMPS



**R. A. ROSS & ASSOCIATES, INC.** 502 267-8677 • 1 800-489-8677  
*Keeping process flowing since 1985*

### MUNICIPAL PRODUCTS

We represent only top quality product lines and back those products with:

• **Knowledge:**

Over 150 years combined experience; continuing education on all our product lines; company headed by engineer.

• **Solutions:**

We solve problems.

• **Service:**

We service what we sell and warrant what we repair.



We are as concerned about clean water as you are. We are proud members of the following associations:

- Alliance Indiana Rural Water
- Kentucky Water & Waste Water Operators Association
- American Water Works Association
- Water Environment Federation

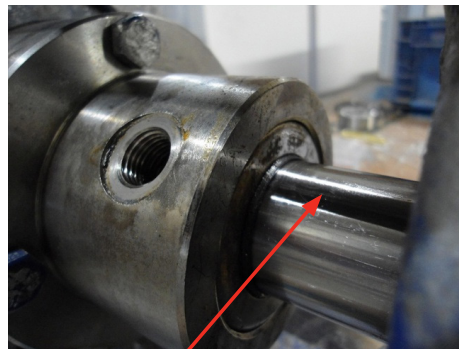
### DROP-IN PUMP/PARTS/KITS

We offer several drop-in pumps and blowers, plus parts and part kits for the following product lines:

- |               |                  |
|---------------|------------------|
| • ABS         | • Seepex         |
| • Durco       | • Tarby          |
| • Flowserve   | • Tsurumi        |
| • Flygt       |                  |
| • Hydromatic  | <b>BLOWERS</b>   |
| • Gorman Rupp | • DuroFlow       |
| • Goulds      | • Gardner Denver |
| • Moyno       | • Roots          |
| • Myers       | • Sutorbilt      |
| • Netzsch     |                  |

### Repair case study:

A German made Italian owned company pump with no parts available in the US had a lip seal leaking a dangerous chemical. We solved the problem in a very timely manner, saving the customer both time and money, and created a vastly safer pump.



*The original lip seal was installed in the back of the stuffing box to keep the oil inside the box.*



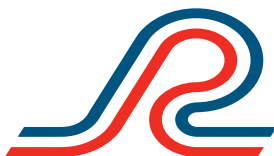
*We custom designed a low operating height Type 8 mechanical seal in place of the lip seal for improved sealing.*

Sales and service of the following:

- Lift station pumps
- High service pumps
- Booster pumps
- Grinder pumps
- Sewage pumps
- Self-priming pumps
- Portable engine drive pumps
- Custom pump and blower packages
- Chemical feed pumps and systems
- Metering pumps
- \* Injection quills / corporation stops, etc.
- Filter feeders / shot feeders
- Water columns
- Polymer injection
- Aeration blowers
- Polyethylene storage tanks



*Expert repairs on every product we sell.*



**R. A. ROSS & ASSOCIATES, INC.**  
*Keeping process flowing since 1985*

2231-A Ampere Drive, Louisville, KY 40299  
502 267-8677 • 1 800-489-8677  
Fax 502 266-7928 • [www.raross.com](http://www.raross.com)

**PUMPS • FILTERS • BLOWERS • MIXERS • REPAIRS • SPECIALTY**

